

# ***MONTERO SPORT***

---



**MITSUBISHI  
MOTORS**

Drive your Ambition



**Elevate Your Journey**



From a bold new look, to the advanced suspension engineered for better comfort and increased off-road toughness, to the outstanding 4WD performance and high obstacle clearances, the New Montero Sport is designed to climb up, over, around and through the toughest terrain.

#### 2.4L MIVEC CLEAN DIESEL ENGINE (4N15)



2.4L In-line 4 DOHC 16-Valve Direct Injection Clean Diesel Engine with Variable Geometry Turbo [VGT] and Mitsubishi Innovative Valve timing Electronic Control [MIVEC] (4N15) Clean power. Optimum performance. Remarkable fuel economy.

- Maximum Power: 181 Ps @3,500 rpm
- Maximum Torque: 430 Nm @2,500 rpm



#### 8-SPEED AUTOMATIC TRANSMISSION



The first in its class 8-speed automatic transmission with Sports Mode is designed to maximize fuel efficiency and engine power. Sports Mode lets driving enthusiasts use the magnesium alloy paddle shifters as a manual override.

#### A BOLD NEW DESIGN

The bold, refined, high-quality design, emphasized by sophisticated lines, delivers a commanding look from every angle.



#### NEW LED REAR COMBINATION LAMPS

The LED rear combination lamps further accentuate the New Montero Sport's width while increasing visibility for enhanced safety. (GT)



#### NEW ADVANCED DYNAMIC SHIELD CONCEPT FASCIA

The innovative and powerful evolution of the Dynamic Shield creates the confident face and road presence of the New Montero Sport.

#### LARGE COMBINATION TURN SIGNAL AND FOG LAMPS

The fog lamps integrated with the large turn signal lamps offer a bolder look on the New Montero Sport.



#### NEW 18" ALLOY WHEELS

The newly designed alloy wheels evoke the strength to handle tough surface conditions. Roll in style with these striking two-tone alloy wheels for the GT variant and sleek alloy wheels for the GLS and GLX variants.



# MONTERO SPORT

## BLACK SERIES

Unbridled luxury, remarkable power and forward-thinking safety get a fresh sophisticated look with blacked-out details. Eclipse the conventional with the Mitsubishi Montero Sport Black Series



\* Also available  
in Jet Black Mica

### NEW FEATURES



Black Front Grille



Black Lower Bumpers



Black Roof



Black Spoiler



Black Alloy Wheels



**ELECTRONIC DIAL SUPER SELECT 4WD-II**  
WITH OFF-ROAD MODE TRACTION CONTROL (GT 4WD)

The New Montero Sport delivers superior off-road performance thanks to the Super Select 4WD-II with Off-Road Mode Traction Control. The system offers the advantage of four (4) drive settings and four (4) different terrain controls. A center differential lock controls torque distribution to the front and rear tires for superior handling while the shift-on-the-fly system lets drivers react immediately to any condition without stopping (except when shifting to 4LLc).



**NEW 8" COLOR LCD INSTRUMENT METER CLUSTER**

A first for Mitsubishi, the large 8" full LCD meter cluster enhances the advanced look and feel of the cockpit. The different display types provide a smooth, intuitive grasp of advanced driver assistance systems and other car functions at a glance. (GT/Black Series 2WD)



**MITSUBISHI REMOTE CONTROL**

Introducing the New Mitsubishi Motors Smartphone App. Control select vehicle functions via your smartphone. (GT)



**Tailgate Open/Close/Lock Automatically**



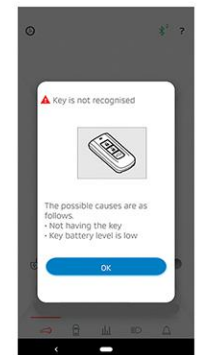
**Vehicle Reminder**  
When leaving the vehicle, the app notifies you if you have forgotten to lock the doors or switch off the headlights.



**Car Finder**  
Locate your vehicle in a large parking lot, by turning on the headlights using your smartphone.



**Vehicle Information**  
Displays information on your driving status such as fuel consumption and green driving score.



**Troubleshooting**  
The app provides you with troubleshooting solutions when the vehicle doesn't respond to the remote control operation.



## ROOMY AND HIGH-QUALITY INTERIOR

A luxurious and advanced design that provides intelligent operation and comfortable space for passengers.



To help provide clean indoor air, the A/C is equipped with Panasonic's nanoe™ electrostatic atomization technology that purifies the air and inhibits the growth of pollutants such as viruses and bacteria including SARS-CoV2. (GT/Black Series 2WD)

NOTE: nanoe™ and the nanoe™ mark are trademarks of Panasonic Corporation.



## NEW SMARTPHONE-LINK DISPLAY MULTIMEDIA ENTERTAINMENT SYSTEM

Infotainment made more user-friendly with Apple CarPlay and Android Auto compatibility and an 8" display screen for better visibility. Smart Display Audio [SDA] can also be linked to the LCD instrument cluster for the driver's convenience. (GT / GLS)

## Test results: novel coronavirus activity inhibited

### Test of a generator of nanoe™

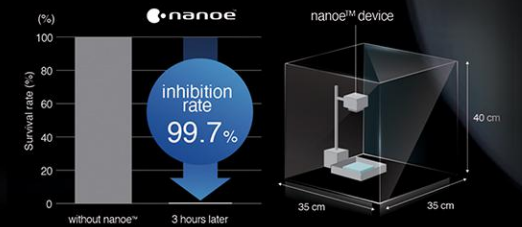
#### Overview

The objective of this test was to determine if nanoe™ inhibit the activity of the SARS-CoV-2 virus. Gauze saturated with SARS-CoV-2 virus solution was exposed to a generator of nanoe™ from a distance of 15cm in a 45L box for 3 hours. Over 99.7% of the activity of the SARS-CoV-2 virus was inhibited.

#### Details

(1) Testing organisation: Osaka Prefecture University (2) Test subject: novel coronavirus (SARS-CoV-2), (3) Test volume: 45L enclosed box (400 mm x 350 mm x 350 mm), (4) Exposure time: 3 hours, (5) Exposure distance: 15cm.

#### Test results



Notes: (1) The virus infectious titer was measured and used to calculate the inhibition rate. (2) This verification was designed to generate basic research data on the effects of nanoe™ on the novel coronavirus in laboratory conditions. It was not designed to evaluate product performance.

Notes: Photograph is for illustrative purposes.

## NEW POWER TAILGATE

The Power Tailgate with Keyless Operation System [KOS] allows you to access the rear cargo with ease (GT).

Operations include the following:

### 1. Close and lock function

The tailgate can be closed and locked automatically with the lock switch.

### 2. Hands-free access

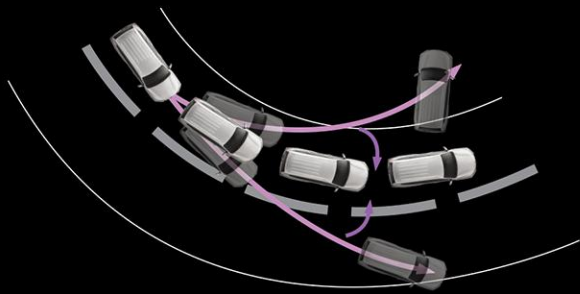
Movement sensors are positioned at the corners of the rear bumper. This allows you to open and close the tailgate automatically by placing your foot in front of the sensors in an up-down motion.

### 3. Height memory function

The tailgate opening height can be set based on your preference. When you have the tailgate set to your desired height, press and hold that button to stop on your desired position.





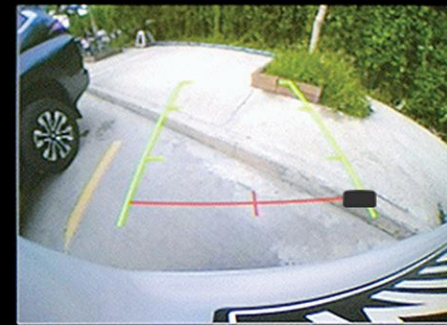
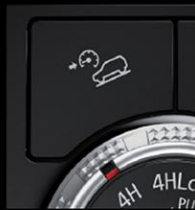


### MITSUBISHI ACTIVE STABILITY AND TRACTION CONTROL [M-ASTC]

Maintains vehicle stability and optimizes traction to prevent wheels from skidding during adverse conditions and emergency maneuvers by applying brake force to one or more wheels and adjusting the engine output. (GT / GLS)

### HILL DESCENT CONTROL [HDC]

When going downhill, the HDC controls and maintains the vehicle's speed automatically to allow the driver to focus on negotiating the steep or slippery descent more safely. (GT 4WD)



Check surroundings for safety.

PHONE

MEDIA

NAV

HOME

←

→

⏻

### MULTI AROUND MONITOR

The views from cameras mounted on the front, rear and sides of the vehicle (including a bird's-eye view) can be displayed in various combinations to reveal what are in the blind spots and help you park more safely. (GT / GLS)

## MORE ADVANCED SAFETY FEATURES



### BLIND SPOT WARNING [BSW] with LANE CHANGE ASSIST [LCA]



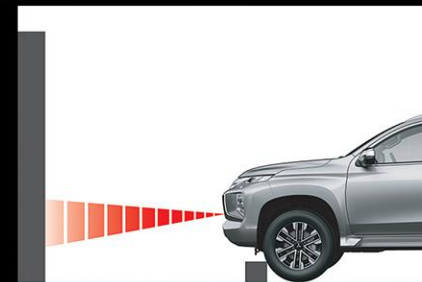
BSW together with the LCA helps the driver avoid sideswiping another vehicle when changing lanes by detecting vehicles at its rear quarters and alerting the driver with an audible alert and a flashing light in the side view mirror. (GT 4WD)

### REAR CROSS TRAFFIC ALERT [RCTA]



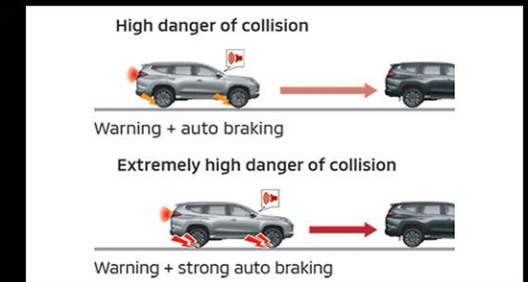
The driver is alerted when the rear radar sensors detect approaching vehicles nearby while the reverse gear is engaged. A warning message appears in the multi-information display, a buzzer sounds, and an indicator blinks in both side view mirrors. (GT 4WD)

### ULTRASONIC MISACCELERATION MITIGATION SYSTEM [UMS]



Reduces accidents resulting from abruptly pressing the accelerator from standstill position by detecting obstacles in front or behind the New Montero Sport. (GT 4WD)

### FORWARD COLLISION MITIGATION SYSTEM [FCM]



When there is a risk of collision, the FCM system alerts the driver with a visual and audible warning. If the driver does not respond, the system automatically applies moderate to emergency braking. (GT 4WD)



## VEHICLE SPECIFICATIONS

GENERAL SPECIFICATIONS	GT 4WD A/T	Black Series 2WD A/T	GLS 2WD A/T	GLX 2WD M/T
Overall Length (mm)	4825			
Overall Width (mm)	1815			
Overall Height (mm)	1835 (with antenna and roof rail)			
Wheelbase (mm)	2800			
Minimum Ground Clearance (mm)	218			
Gross Vehicle Weight (kg)	2,775	2,710		
<b>ENGINE</b>				
Model and Type	(4N15) 2.4L 4 In-line 16-Valve DOHC with Variable Geometry Turbo (VGT) and Mitsubishi Innovative Valve timing Electronic Control (MIVEC)			
Displacement (cc)	2442			
Maximum Power (Ps/rpm)	181 / 3,500			
Maximum Torque (Nm/rpm)	430 / 2,500			
Fuel System	Electrical Fuel Injection (Common Rail)			
<b>TRANSMISSION</b>				
Model	8-Speed Automatic with Sports Mode			6-Speed Manual
Drivetrain	Super Select 4WD-II	Rear-Wheel 2WD		
Off Road Mode	Equipped	-		
<b>BRAKES</b>				
Brake Override System	Equipped			
Brake Assist	Equipped			
Electric Parking Brake	Equipped with Brake Auto Hold			
Front Ventilated Disk	Equipped			
Rear Ventilated Disk	Equipped			
<b>TIRES AND WHEELS</b>				
Tires	265 / 60 R18 110H			
Wheels	18" x 7.5J Two-Tone Alloy	18" x 7.5J Black Alloy	18" x 7.5J Alloy	
<b>SUSPENSION</b>				
Front	Double Wishbone with Coil Springs and Stabilizer Bar			
Rear	3-Link Coil Springs and Stabilizer Bar			
<b>STEERING</b>				
Gear Type	Rack and Pinion			
Power Steering	Equipped			
Steering Wheel Audio Remote	Equipped			
Multi Information Display Remote	Equipped			
Tilt Adjustment	Equipped			
Telescopic Adjustment	Equipped			
Cruise Control	Equipped (Adaptive)		Equipped	

	GT 4WD A/T	Black Series 2WD A/T	GLS 2WD A/T	GLX 2WD M/T
<b>MULTIMEDIA SYSTEM</b>				
Head Unit Type	8" Touch Screen Smartphone-link Display Audio (SDA) with Apple CarPlay and Android Auto Compatibility, Handsfree & Voice Control, Navigation System and Composite Adapters (1 HDMI and 2 USB)			Smartphone-link Display Audio (SDA) 7" Display (Touch Screen), Hands Free & Voice Control Composite Adapter: USB:1
2nd Row USB Port	Equipped x 2			-
GPS Navigation System	Equipped			-
Speakers	6			4
Antenna	Shark Fin			
<b>SAFETY</b>				
SRS Airbags	7	6	2	
Seatbelts	Front Row	3 pt. ELR w/ Double Pretensioner for Driver & Passenger with Adjustable Anchor		
	2nd Row	3 pt. ELR x 3		
	3rd Row	3 pt. ELR x 2		
Active Stability and Traction Control (M-ASTC)	Equipped			-
Hill Start Assist (HSA)	Equipped			-
Hill Descent Control (HDC)	Equipped	-		-
Trailer Stability Assist	Equipped			-
ISO-Fix	Equipped			
Tether Anchor	Equipped			
Forward Collision Mitigation (FCM)	Equipped			-
Blind Spot Warning with Lane Change Assist (BSW with LCA)	Equipped	-		-
Ultrasonic Misacceleration Mitigation System (UMS)	Equipped			-
Rear Cross Traffic Alert (RCTA)	Equipped	-		-
Anti-Lock Braking System (ABS)	Equipped with Electronic Brakeforce Distribution (EBD)			
Multi Around Monitor	Equipped			-
<b>AMENITIES</b>				
Tailgate	Power Lift Tailgate with Hands-free Function		Lift Type	
Instrument Meter Cluster	LCD Instrument Meter Display		High Contrast Instrument Meter Display	
12V Accessory Socket	Equipped			
220V Power Outlet (150W)	Equipped			-
Day and Night Rear View Mirror	Equipped (Auto-dim)		Equipped	
A/C System with Air Cleaning Function (Ion Generator) - nanoe™	Equipped			-

- Color, photos and specifications may vary from actual unit - Specifications may change without prior notice.

## GENUINE ACCESSORIES



## VEHICLE COLORS



On quality:  
We seek excellence in our products and services and recognize that customer satisfaction is the essence of our mission.

BF10020011 © Mitsubishi Motors Philippines Corporation